

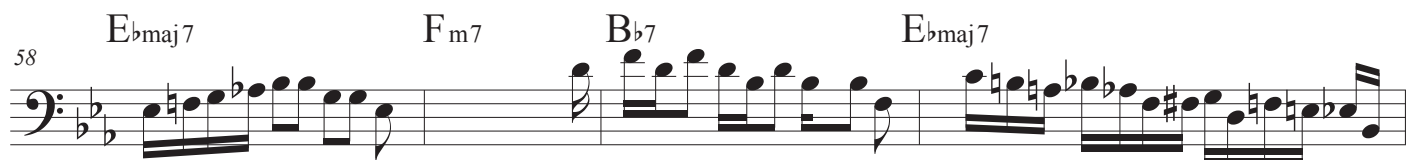
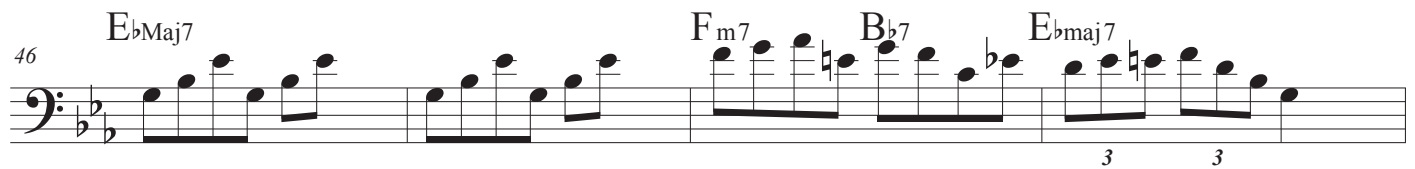
## O TANNENBAUM

Sheet music for Bass clef Instruments, featuring the title "O TANNENBAUM". The music is written in bass clef, 4/4 time, with a key signature of two flats (Bb and Eb). The score consists of eight staves, each containing a line of music and corresponding chord symbols above it.

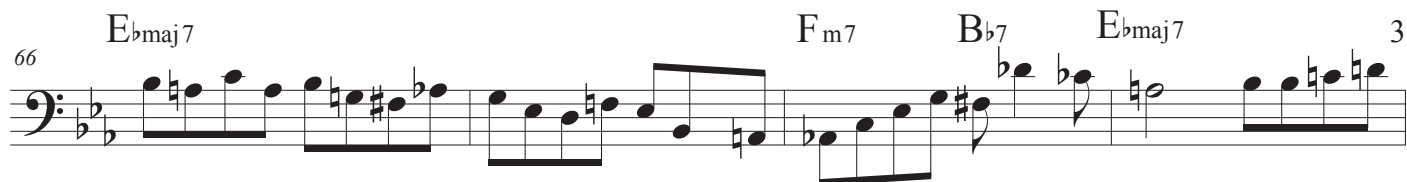
Chord symbols and staff numbers are as follows:

- Staff 1: Ebmaj7, Fm7, Bb7, Ebmaj7
- Staff 2: 6 Ebmaj7, Fm7, Bb7, Ebmaj7
- Staff 3: 10 Ebmaj7, Fm7, Bb7, Ebmaj7
- Staff 4: 14 EbMaj7, Fm7, Bb7, Ebmaj7
- Staff 5: 18 Ebmaj7, Fm7, Bb7, Ebmaj7
- Staff 6: 22 Ebmaj7, Fm7, Bb7, Ebmaj7
- Staff 7: 26 Ebmaj7, Fm7, Bb7, Ebmaj7
- Staff 8: 30 EbMaj7, Fm7, Bb7, Ebmaj7

## O TANNENBAUM



## O TANNENBAUM



# O TANNENBAUM

4

98  $E_b^{maj}7$   $F_{m}7$   $B_b7$   $E_b^{maj}7$

102  $E_b^{maj}7$   $F_{m}7$   $B_b7$   $E_b^{maj}7$

106  $E_b^{maj}7$   $F_{m}7$   $B_b7$   $E_b^{maj}7$

110  $E_b^{Maj}7$   $F_{m}7$   $B_b7$   $E_b^{maj}7$